

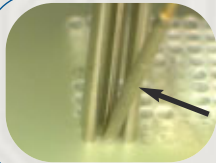
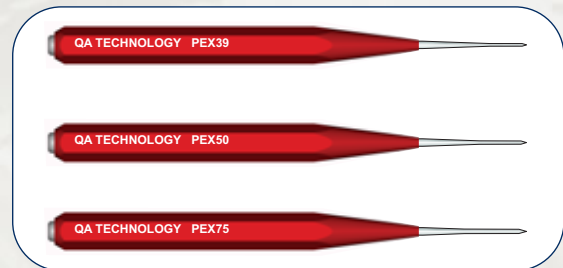
New Product Release

May 2009

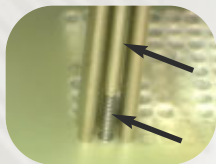


New X Probe Extraction Tool (PEX Tool)

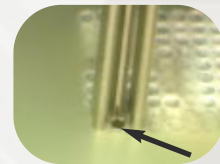
QA Technology is pleased to now offer a new extraction tool used for removing damaged X Probe tubes without damaging the fixture. These new **PEX** tools are comprised of a tapered steel pin that is designed to lock into the X Probe tube ID. They are available in all X Probe sizes: X39, X50 and X75 Series.



Step 1: If the broken X Probe is in the center of a group of probes, the surrounding probes may have to be removed first so that you can gain access.



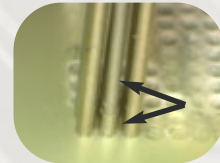
Step 2: If necessary, remove any of the remaining components (i.e. spring or plunger) of the broken X Probe using tweezers or needle-nose pliers.



Damaged X Probe tube remains.



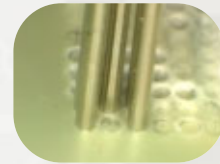
Step 3: Insert the appropriate sized PEX tool into the broken X Probe tube. If the X Probe tube ID has been damaged the pointed nose of the PEX tool can be used to reform the tube. Push the PEX tool firmly into the X Probe tube. Do not push the tool too hard so as to move the termination pin below.



PEX tool grabs the X Probe tube.



Step 4: Pull straight up on the PEX tool. The portion of the broken X Probe tube will be removed as the PEX tool is pulled out. The use of tweezers or needle-nose pliers may be required to slide the X Probe tube off of the nose of the tool.



X Probe is removed.

For pricing information, please contact Customer Service at (603) 926-0348 or sales@gatech.com.