



QA Technology Company, Inc.

# A p p l i c a t i o n s N o t e

## Alternate X-Probe Removal Techniques

Document# D10065

Rev A

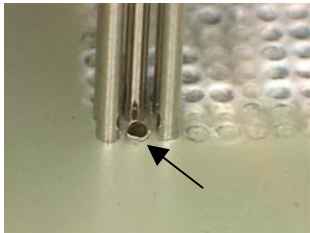
ECN# 2632

Page 1 of 1

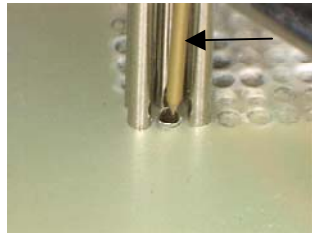
In some cases it may be necessary to remove a broken off X-probe. The best way to remove a broken off X-Probe is to solder a piece of buss wire or an X probe plunger into the broken off X-Probe tube and pull it out with tweezers. The photos below show the process using an X39 plunger method:

Note: If the broken X-Probe is in the center of a group of probes, the surrounding probes will have to be removed first so that you can gain access.

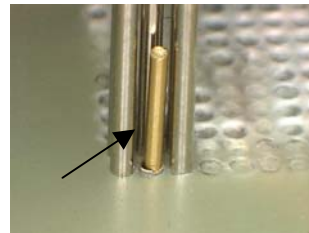
- 1) Insert a plunger point end first into the end of the broken off X-Probe tube. As previously mentioned a piece of buss wire can be used or even a new or used X-Probe. 95% of the time the tube will break cleanly. In the other 5% of the cases where the tube does not allow a plunger to be installed a pointed awl or needle can be used to reform the hole.
- 2) Solder the plunger or buss wire into the broken off X-Probe.
- 3) Pull the damaged X-Probe from the fixture plate with tweezers or suitable pliers.
- 4) Inspect the hole for damage and clean up by hand with an appropriate sized twist drill.
- 5) Install a new X-Probe.



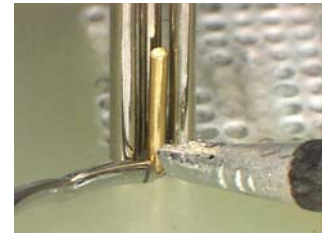
Probe tube is broken off.



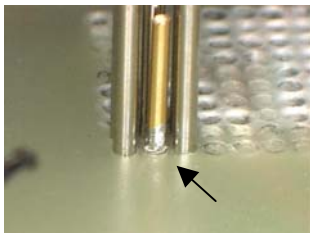
The X probe plunger is placed into the broken off



The plunger is placed into the broken tube.



Solder the plunger to the tube.



Plunger is soldered.



Using tweezers pull straight up on the soldered plunger thereby removing the broken tube.



Broken off tube is completely removed from the drilled hole.