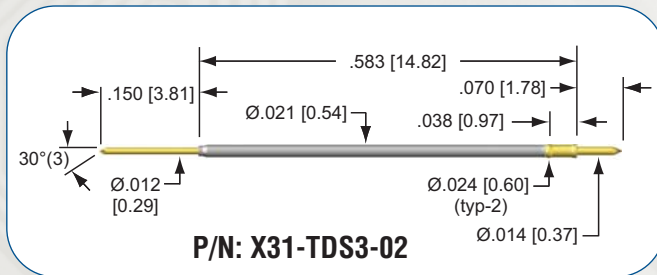




QA Technology is pleased to offer our new .0315 [.800mm] double ended termination pin for wireless fixturing. Double-ended termination pins allow construction of X Probe® Socketless fixtures with shorter signal path lengths than conventional wire wrap designs. The shorter path length allows better control of the signal from the tester circuits to the Unit Under Test (UUT).

The X31-TDS3-02 wireless termination pins are designed to be used with our X31-25 Series Probes (.250 [6.35] stroke) or X31-40 Series Probes (.400 [10.16] stroke) and can be mixed-mounted with other X Probe® wireless termination pin sizes.

Doubled Ended Termination



Tools

Recommended drill hole sizes for AT7000, G10/FR4 or similar material for the BACK PLATE should be gauged at .0217/.0225 [0.551/0.572]. Suggested drill size #74 or .57mm

Pin Gauge Tool: PG-X31-T

Installation Tool: ITRX31-FL or ITRX31 SET -.010, .010, .020, .030 or .040

Extraction Tool: ETRX31

Interface Probe Specifications

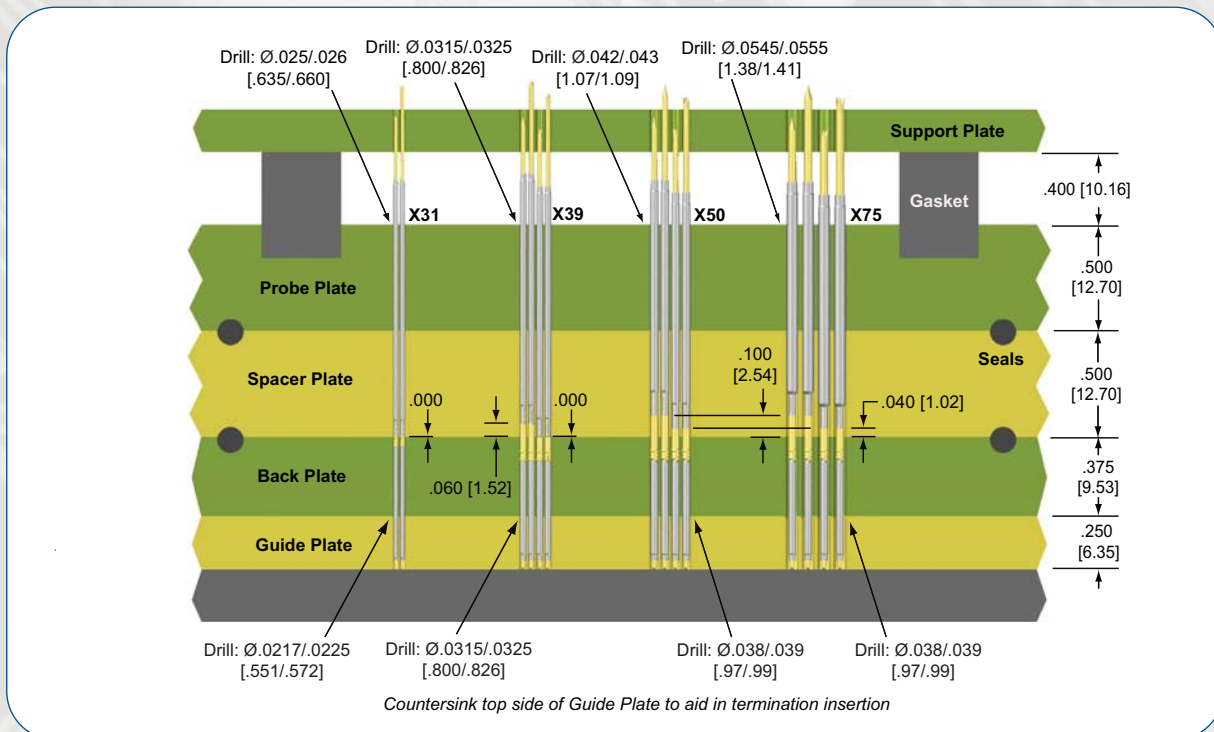
Full Stroke: .150 [3.80] -

Working Stroke: up to .100 [2.54]

Operating Temp: Up to 400°F [204°C]

Spring Force: 3.75 [106] @ working stroke

Suggested Mix Mounting Fixture



All dimensions are in inches [mm]. All spring forces are in ounces [gms].