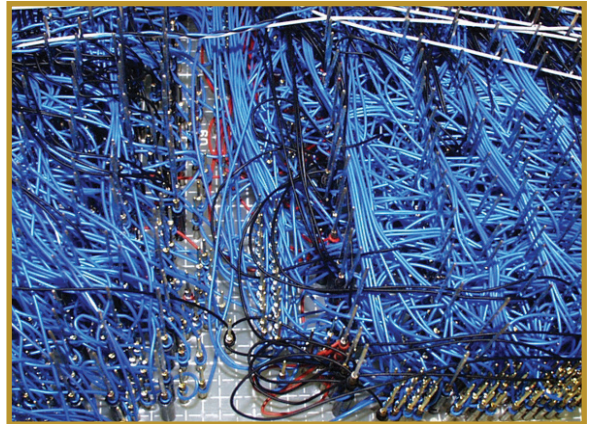


Longer Termination Pins

Fixtures with a high probe count and close centers can be challenging to wire, due to the sheer number of connections and the space available.

To help overcome this, QA now offers longer termination pins for our X Probe Socketless Series.

These new pins are .500" [12.70mm] longer than their standard equivalent, allowing the tails to stick out further through the bottom of the back plate.



Longer termination pins are available for:

X75 TERMINATIONS

P/N: X75-TWA-7G

<https://www.qatech.com/en/products/socketless-probes/X75-25-terminations.html>

X50 TERMINATIONS

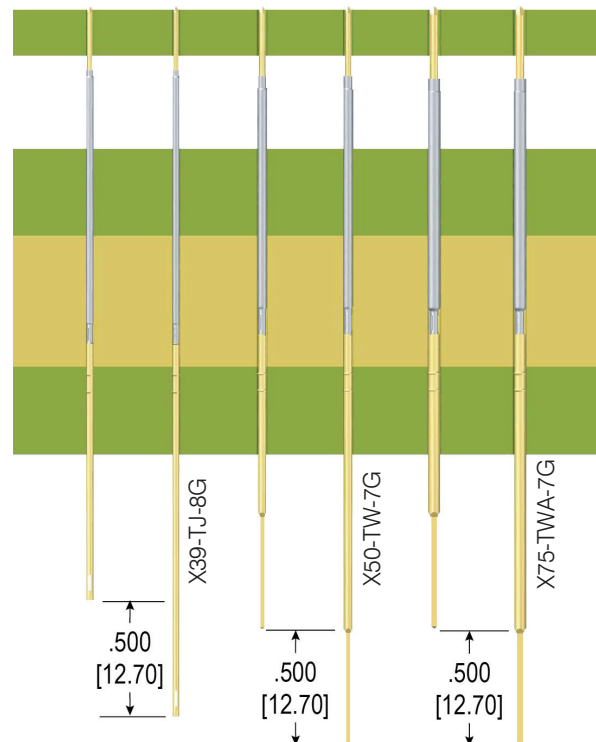
P/N: X50-TW-7G

<https://www.qatech.com/en/products/socketless-probes/X50-25-terminations.html>

X39 TERMINATIONS

P/N: X39-TJ-8G

<https://www.qatech.com/en/products/socketless-probes/X39-25-terminations.html>



Thanks,
The QA Team