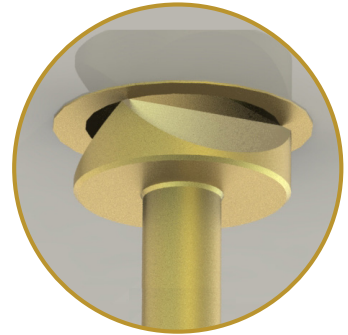




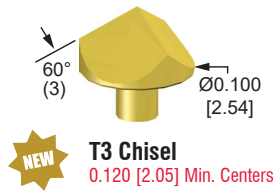
QA Introduces Large Chisel Tip Style Probes

Larger diameter, better contact reliability.



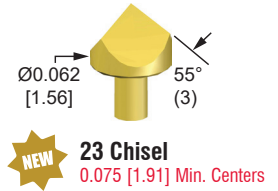
QA Technology has expanded its tip style selection to include two new larger BeCu chisel tip styles for contact with larger plated through holes.

The T3 is now available in our 100-25 of X75-25 series product line. It has a tip diameter of $\text{\O}0.100$ " [2.54mm] and can be used to contact plated through holes with a maximum ID of $\text{\O}0.090$ " [2.29mm].



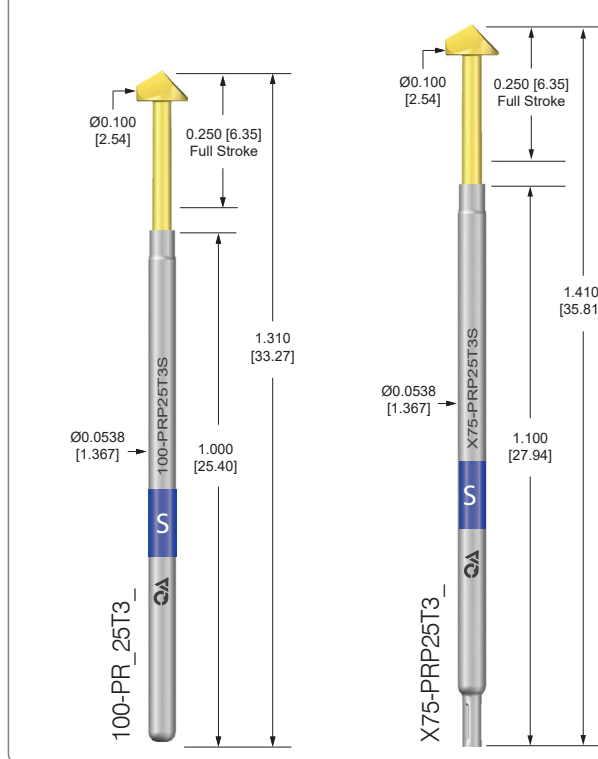
T3 Chisel
0.120 [2.05] Min. Centers

Our 23 tip is now available in our 075-25 or X50-25 series product lines. It has a tip diameter of $\text{\O}0.062$ " [1.57mm] and can be used to contact plated through holes with a maximum ID of $\text{\O}0.052$ " [1.32mm].

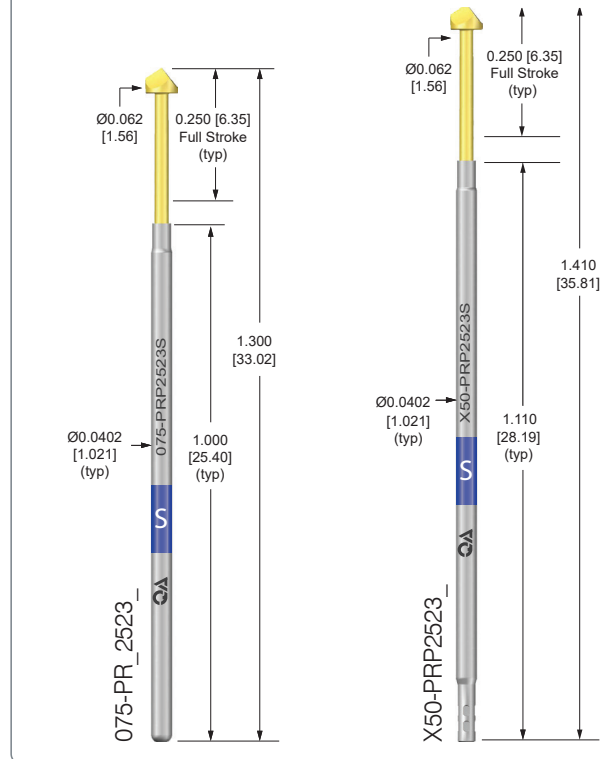


23 Chisel
0.075 [1.91] Min. Centers

100-25 and X75-25 SERIES



075-25 AND X50-25 SERIES



QA's high quality probe tips and fast delivery continue to provide a variety of solutions for your high-volume test needs.

For more information or pricing, please contact one of our **Customer Service Team** members at **603-926-0348** or visit **www.qatech.com**